

# Ice-loc<sup>®</sup> the Frozen Pipe Protector

**viega**

Exclusive Viega Product

**Don't Wait Till The Cold Of Winter, Install in Spring, Summer, Fall**

**Frozen Pipe No Ice-Loc**

**Frozen Pipe with Ice-Loc No Rupture!**



ANSI 61 Certified

Tested By One of Our Top Laboratories In The U. S.

FDA Approved



Pipe Sizes: pink for 1/2 in blue for 3/4 in green for 1 in

## HOW TO INSTALL ICE-LOC



**1** Turn off water supply and remove faucet



**2** Cut the ends of the Ice-loc at an angle to allow water to flow easier



**3** Insert a ring clip at the end where you will anchor the Ice-loc core



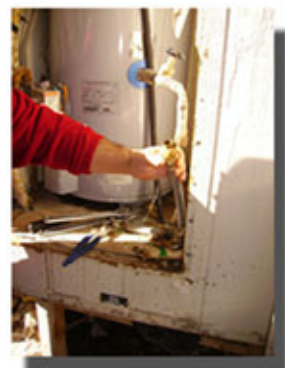
**4** Insert the Ice-loc core and push clip into end of pipe



**5** Allow a small amount of Ice-loc core to extend from the pipe Do not obstruct faucet opening



**6** Apply pipe thread tape. Replace faucet and turn on water supply



Insert Ice-Loc under mobile home water supply



Apply Ice-Loc to water heater pipes in a cold garage



12 year old Ice-Loc in an outside water pipe

Learn More, Go To [www.iceloc.com](http://www.iceloc.com)  
More Details on Website

US Patent Nos. 5,538,043 6,009,906

Copyright © 2010 Ice-loc® All Rights Reserved